

(12) **United States Patent**
Stephens

(10) **Patent No.:** **US 10,140,147 B2**
(45) **Date of Patent:** **Nov. 27, 2018**

(54) **INTELLIGENTLY ASSISTED IOT ENDPOINT DEVICE**

(71) Applicant: **Sanctum Solutions Inc.**, Houston, TX (US)

(72) Inventor: **Noel Shepard Stephens**, Spring, TX (US)

(73) Assignee: **Sanctum Solutions Inc.**, Houston, TX (US)

(*) Notice: Subject to any disclaimer, the term of this patent is extended or adjusted under 35 U.S.C. 154(b) by 184 days.

(21) Appl. No.: **15/434,928**

(22) Filed: **Feb. 16, 2017**

(65) **Prior Publication Data**
US 2018/0232250 A1 Aug. 16, 2018

(51) **Int. Cl.**
G06F 9/455 (2018.01)
H04W 84/18 (2009.01)
H04L 29/08 (2006.01)
H04L 12/26 (2006.01)

(52) **U.S. Cl.**
CPC **G06F 9/45558** (2013.01); **H04L 43/0811** (2013.01); **H04L 67/10** (2013.01); **H04W 84/18** (2013.01); **G06F 2009/45595** (2013.01)

(58) **Field of Classification Search**
CPC G06F 9/45533
USPC 718/1
See application file for complete search history.

(56) **References Cited**

U.S. PATENT DOCUMENTS

7,286,913 B2 * 10/2007 Bodin G05D 1/0044 382/106
7,934,239 B1 * 4/2011 Dagman H04N 21/23433 725/102
8,301,318 B2 * 10/2012 Lacaze G05D 1/0206 701/1
8,977,683 B2 * 3/2015 Rodman H04L 12/1813 348/14.08
9,319,300 B2 * 4/2016 Huynh Van H04L 45/00
9,503,189 B2 * 11/2016 Henry H04B 3/52

(Continued)

FOREIGN PATENT DOCUMENTS

CN 101867530 A 10/2010
CN 104597859 A 5/2015

(Continued)

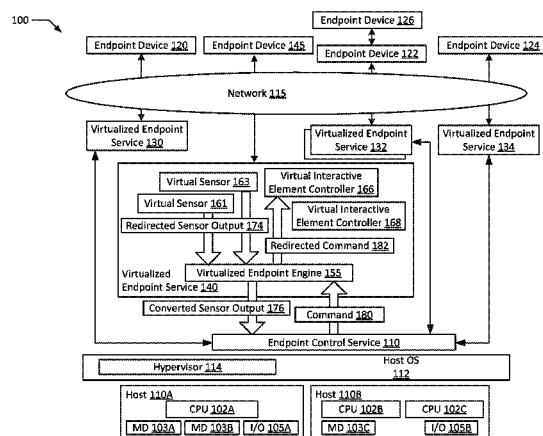
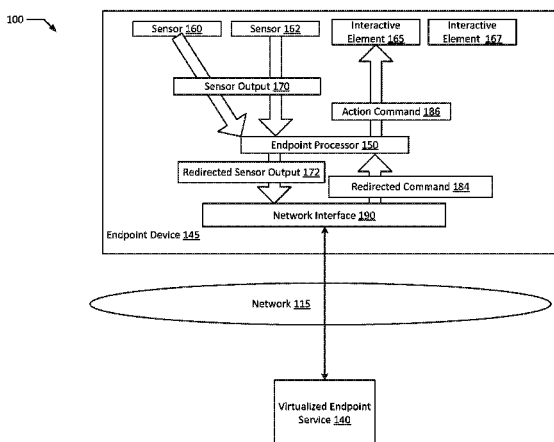
Primary Examiner — Mehran Kamran

(74) *Attorney, Agent, or Firm* — The Petruzzi Law Firm; James D. Petruzzi

(57) **ABSTRACT**

Intelligently assisted IoT endpoint devices are disclosed. For example, an endpoint device determined to have an active network connection redirects input/output data from a physical sensor to a network interface. First redirected data of the input/output data is received, over a network by a virtual sensor of a virtualized endpoint service then output to a virtualized endpoint engine that resulting in conversion into first converted data, which is sent to an endpoint control service. The virtualized endpoint engine receives a first command from the endpoint control service then sends the first command to a virtual interactive element controller which converts the first command into a second command compatible with an interactive element of the endpoint device which performs a task after receiving the second command. The virtual sensor receives second redirected data collected by the physical sensor different from first redirected data as a result of the task.

36 Claims, 7 Drawing Sheets



(56)

References Cited

U.S. PATENT DOCUMENTS

2004/0158355 A1* 8/2004 Holmqvist G05D 1/0236
700/245
2005/0213728 A1* 9/2005 Rodman H04L 12/66
379/202.01
2005/0213737 A1* 9/2005 Rodman H04L 12/1813
379/202.01
2008/0016230 A1* 1/2008 Holtmanns H04L 63/08
709/229
2009/0018712 A1* 1/2009 Duncan G09B 19/167
701/2
2009/0276105 A1* 11/2009 Lacaze G05D 1/0044
701/2
2009/0278479 A1* 11/2009 Platner H05B 37/0245
315/312
2010/0008255 A1* 1/2010 Khosravy G01C 21/20
370/254
2010/0142410 A1* 6/2010 Huynh Van H04L 12/4633
370/255
2014/0244568 A1* 8/2014 Goel H04W 4/08
706/52
2014/0254896 A1 9/2014 Zhou et al.
2015/0006719 A1 1/2015 Gupta et al.
2017/0073085 A1* 3/2017 Tremblay A47G 29/141

FOREIGN PATENT DOCUMENTS

EP 2566281 A1 3/2013
KR 101566957 B1 11/2015
WO 2011/112683 A1 9/2011
WO 2013/123445 A1 8/2013
WO 2016/148773 A1 9/2016
WO 2016/177934 A1 11/2016

* cited by examiner

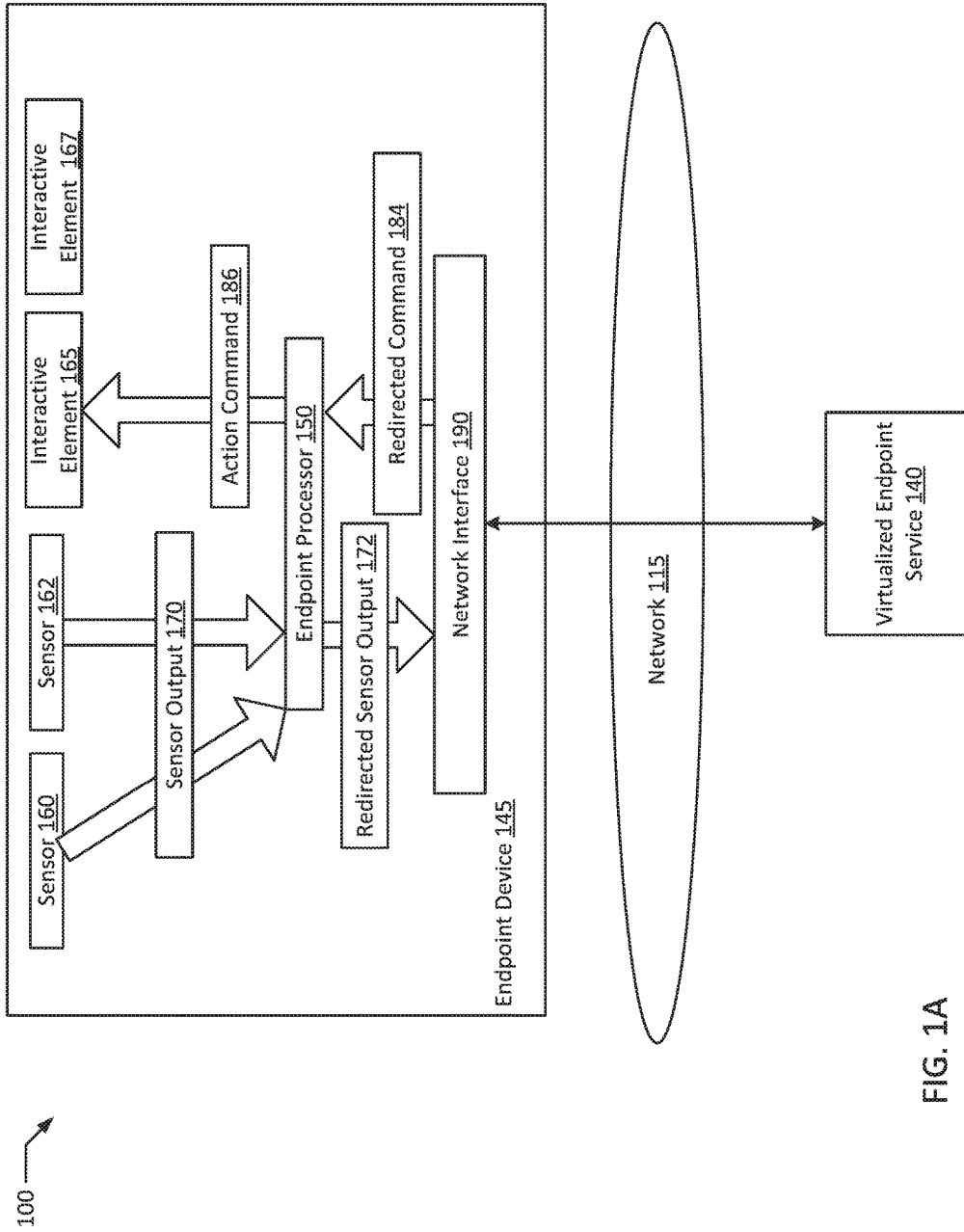


FIG. 1A

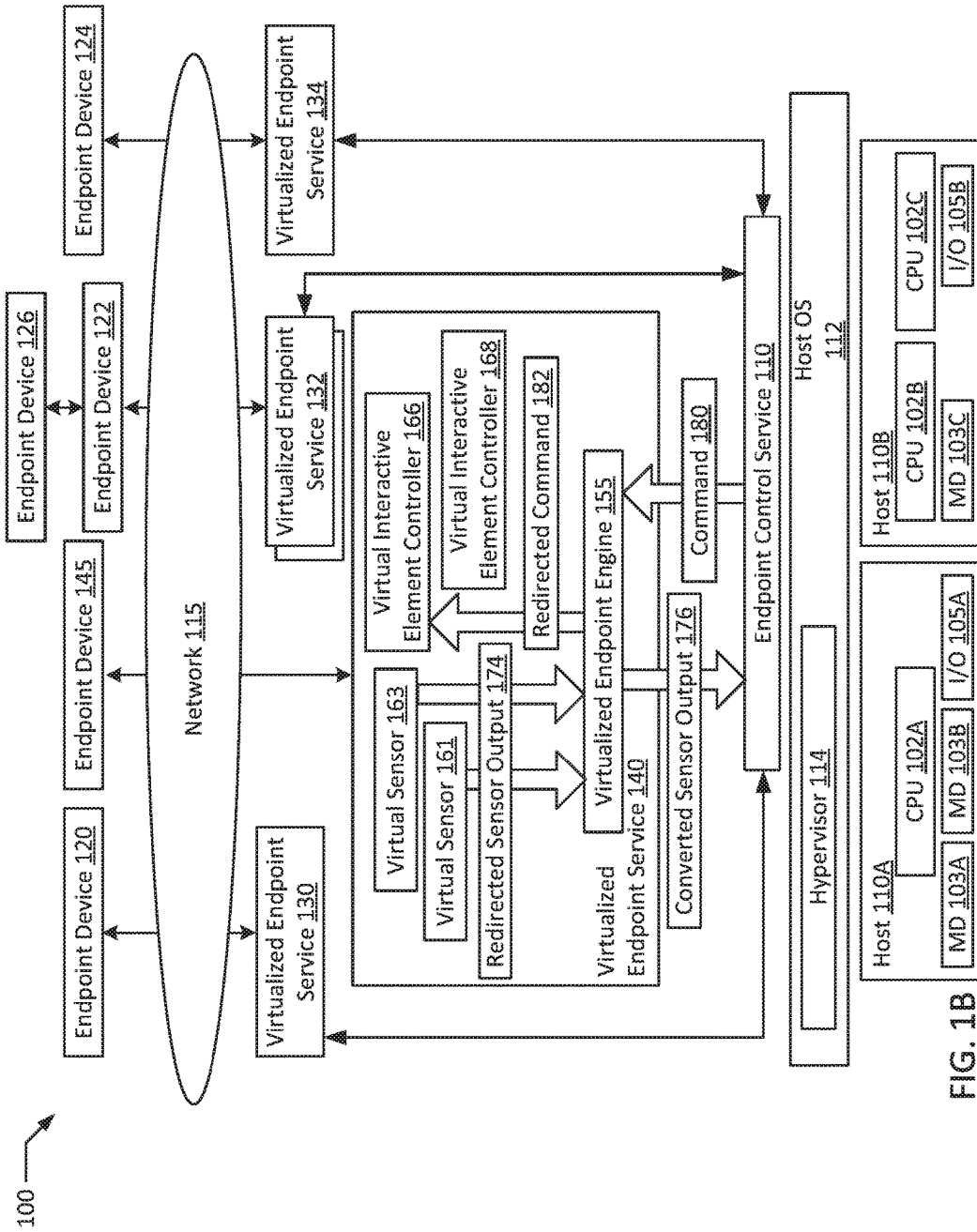


FIG. 1B

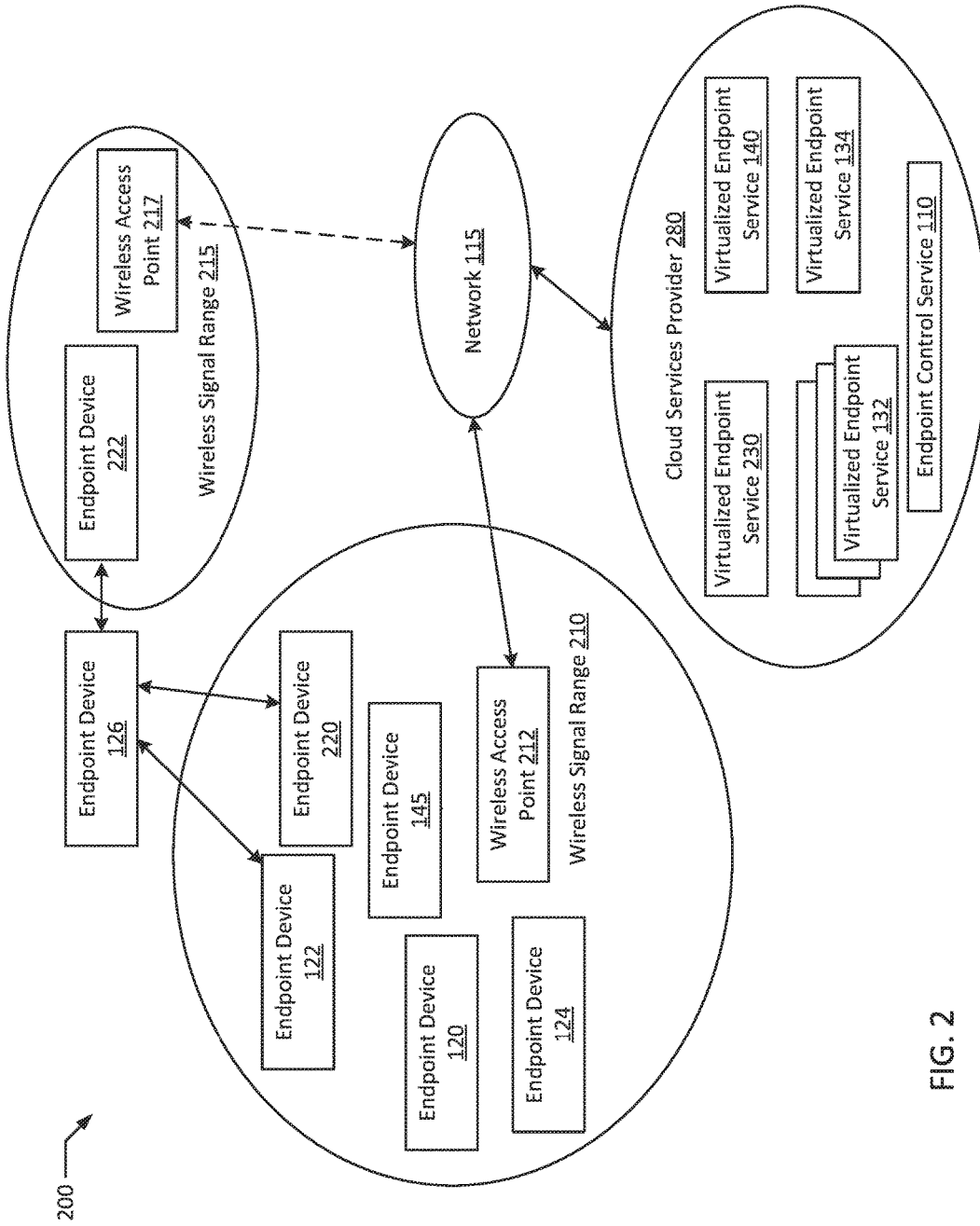


FIG. 2

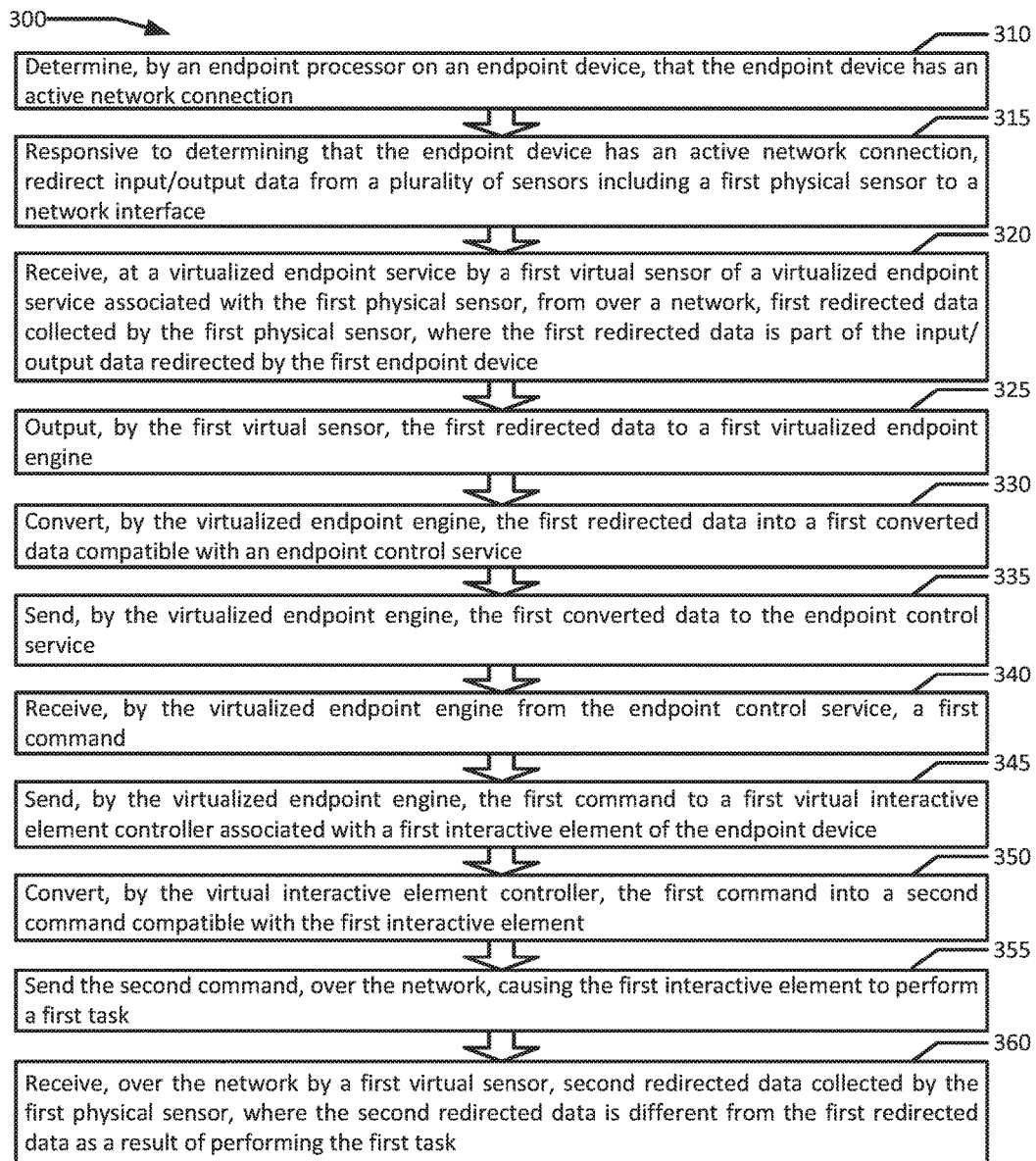


Fig. 3

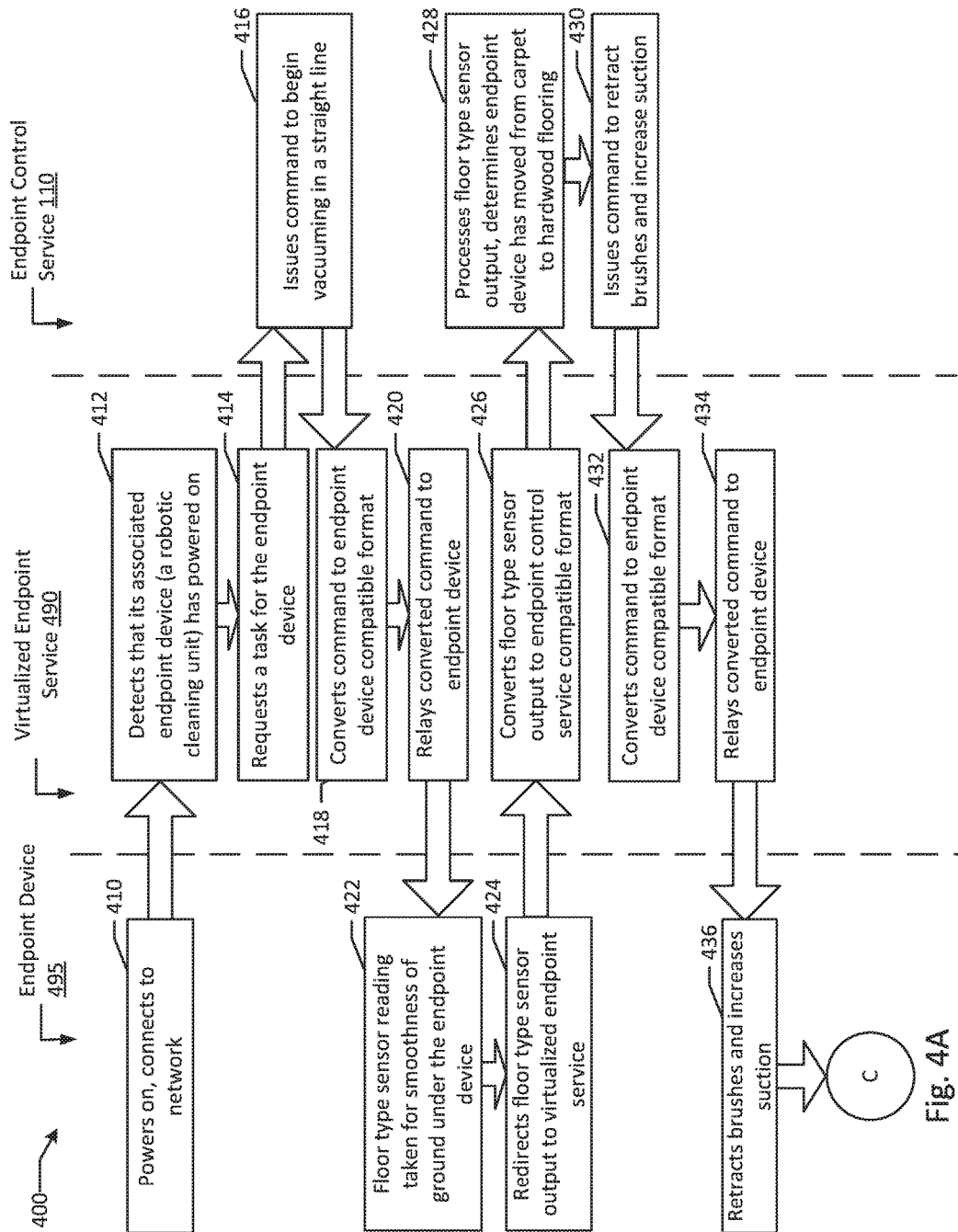


Fig. 4A

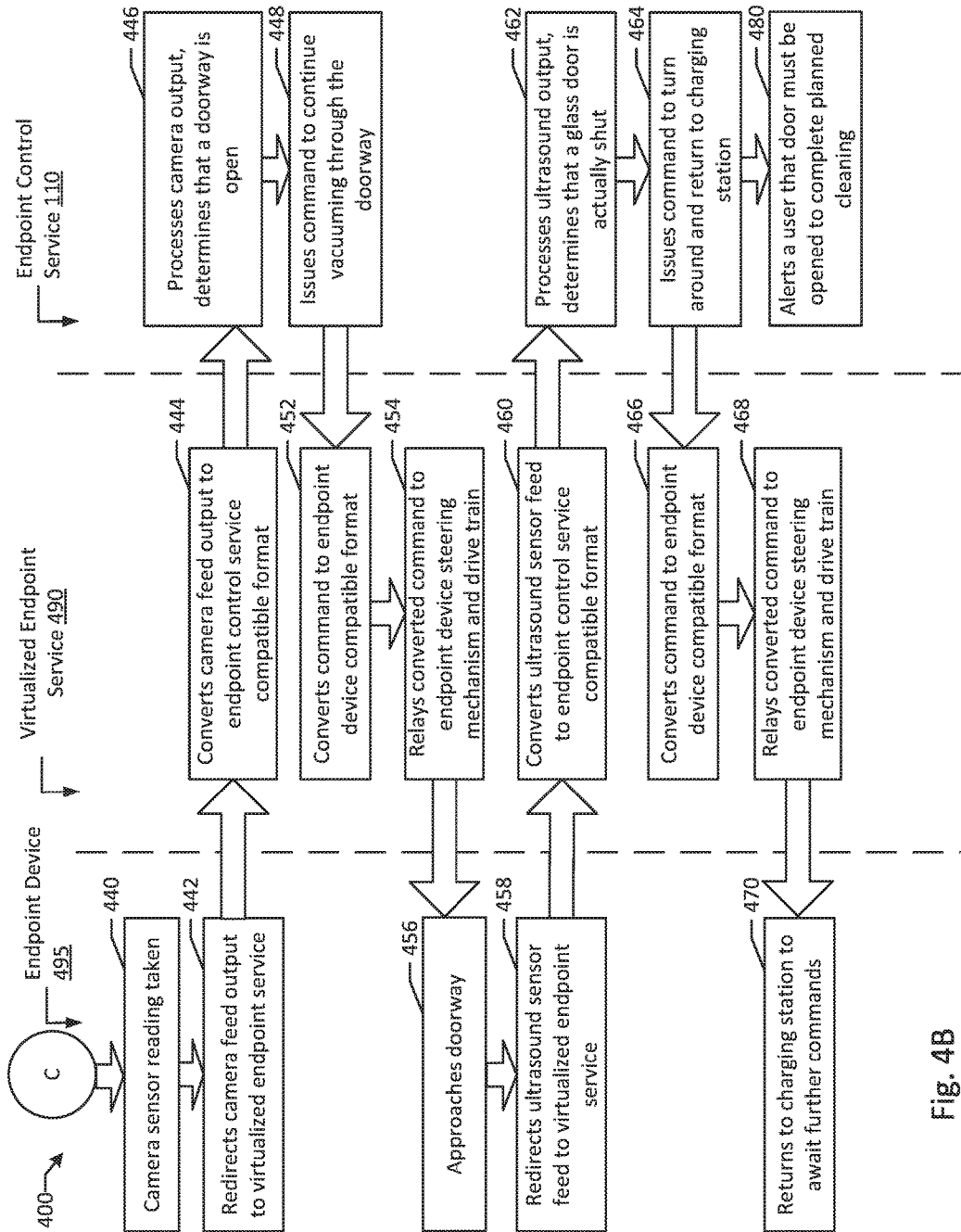


Fig. 4B

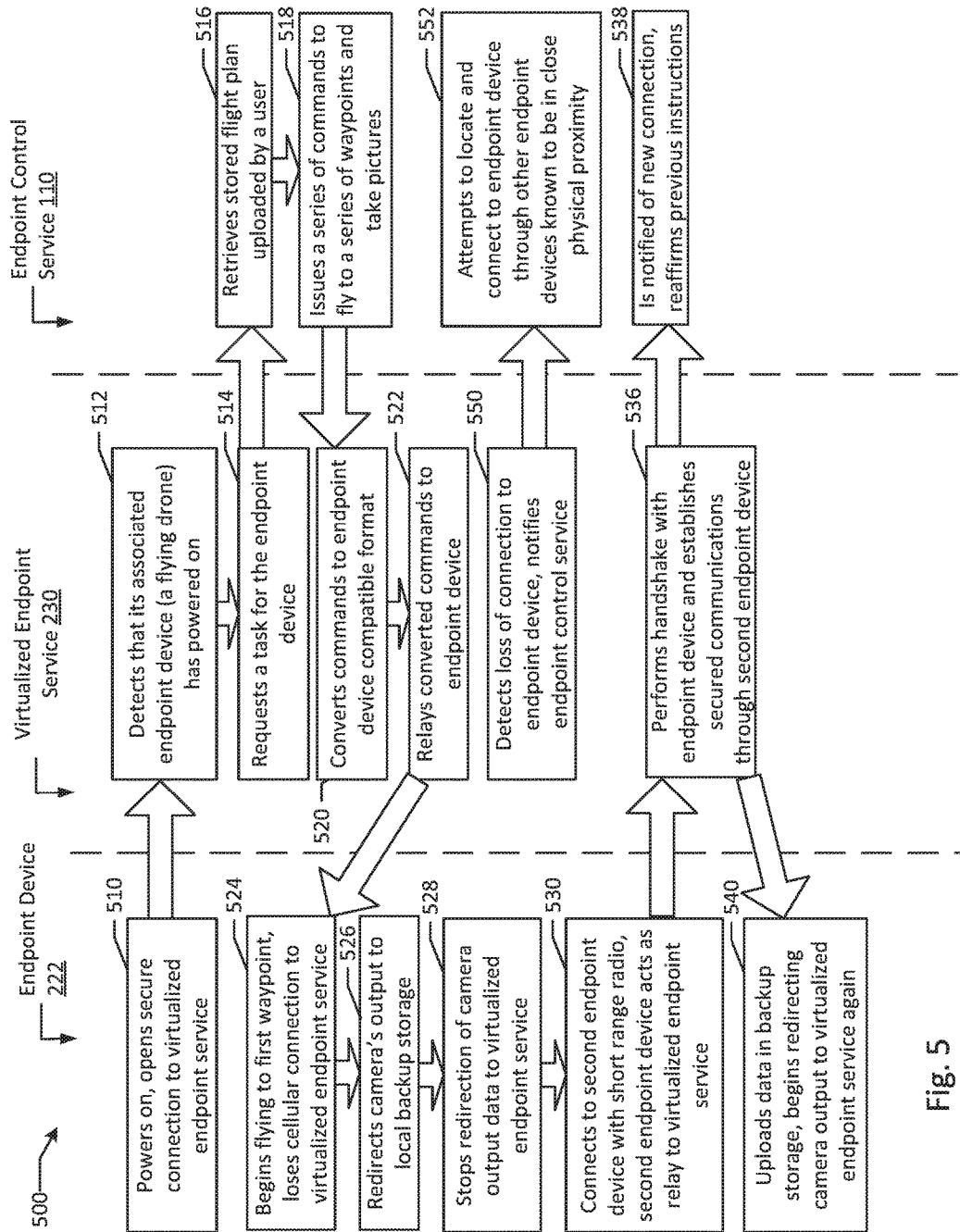


Fig. 5

1

INTELLIGENTLY ASSISTED IOT ENDPOINT DEVICE

BACKGROUND

The present disclosure generally relates to processing input/output (“I/O”) data from Internet of Things (“IoT”) endpoint devices. As microprocessors have become more efficient, and network connectivity more prevalent, an ever increasing portion of goods on the market, both for commercial and consumer retail use, now have internet or intranet enabled capabilities and features. With ever growing capabilities and features, comes an increased demand for processor and memory resources on these IoT endpoint devices. In computer systems, it may be advantageous to scale application deployments by using virtualization in cloud based hosting environments for running application programs. Typically, virtual machines may be quickly launched to scale compute capacity as required by a particular task in virtualized cloud based hosting environments. Virtualization allows a programmer to quickly scale the deployment of applications to the volume of traffic requesting the applications. Virtual machines may be deployed in a variety of hardware environments. There may be economies of scale in deploying hardware in a large scale. To attempt to maximize the usage of computer hardware through parallel processing using virtualization, it may be advantageous to maximize the compute density in a physical hosting environment through virtualization.

SUMMARY

The present disclosure provides a new and innovative system, methods and apparatus for intelligently assisted IoT endpoint devices. In an example, an endpoint device determines that the endpoint device has an active network connection, and based on determining that it has an active network connection, the endpoint device redirects input/output data from a plurality of sensors of the endpoint device including a physical sensor to a network interface. First redirected data collected by the physical sensor is received, over a network by a virtual sensor of a virtualized endpoint service associated with the physical sensor, where the first redirected data is part of the input/output data redirected by the endpoint device. The virtual sensor outputs the first redirected data to a virtualized endpoint engine. The virtualized endpoint engine converts the first redirected data into a first converted data compatible with an endpoint control service then sends the first converted data to the endpoint control service. The virtualized endpoint engine receives a first command from the endpoint control service, and then sends the first command to a virtual interactive element controller associated with an interactive element of the endpoint device. The virtual interactive element controller converts the first command into a second command compatible with the interactive element. The second command is sent over the network causing the interactive element to perform a task. The virtual sensor then receives second redirected data collected by the physical sensor, where the second redirected data is different from the first redirected data as a result of performing the task.

Additional features and advantages of the disclosed method and apparatus are described in, and will be apparent from, the following Detailed Description and the Figures.

BRIEF DESCRIPTION OF THE FIGURES

FIGS. 1A and 1B are block diagrams of an intelligently assisted IoT endpoint device system according to an example of the present disclosure.

2

FIG. 2 is a block diagram of connectivity redundancy for intelligently assisted IoT endpoint devices according to an example of the present disclosure.

FIG. 3 is a flowchart illustrating an example of intelligently assisting an IoT endpoint device system according to an example of the present disclosure.

FIGS. 4A and 4B are flow diagrams illustrating an intelligently assisted IoT endpoint device process according to an example of the present disclosure.

FIG. 5 is a flow diagram illustrating connectivity redundancy for intelligently assisted IoT endpoint devices according to an example of the present disclosure.

DETAILED DESCRIPTION OF EXAMPLE EMBODIMENTS

The concept of connecting sensors that provide feedback over a network related to key operational components of a device is a concept that evolved parallel to the internet. For example, among the earliest uses of networked sensors included monitoring and reporting of the quantity remaining drinks in a vending machine, and the temperature of those drinks, well before personal computers were prevalent. As microprocessor and networking technologies have matured, a logical progression has led to adding computational reporting capabilities to a wide variety of goods. However, with the expansion of the types of devices incorporating network connectivity and onboard intelligence, tradeoffs are typically made between factors such as battery life, hardware cost, size, weight, data security, and other physical constraints placed on a product both from a form factor perspective and from a marketability or profitability perspective.

In an example with a network connected refrigerator, many of the above factors would not be constraints towards placing relatively powerful computing resources onboard, as dedicating a relatively small amount of the internal volume of the refrigerator to computing could, for example, be sufficient for the refrigerator to keep track of expiration dates of food items that are scanned into the refrigerator. Factors like data security are also relatively unimportant, since if a malicious actor already has access to the refrigerator, there are more direct ways to tamper with the food inside than any form of attack on the computing systems of the refrigerator. Power consumption and complexity of computation also tend not to matter since the appliance is served by A/C power and reminders to replace consumed or expired goods do not typically require complex calculations.

Conversely, in an example with a flight capable drone, many similar factors would make the trade offs required in product design much more difficult. In a drone, space and weight tend to be at a premium, as the larger and heavier the drone, the more power is required to keep it afloat, and the more power that is consumed operating non-flight components, the shorter the flight range of the drone. A drone may also be relatively densely packed with sensors of varying types, both for flight maintenance (e.g., altimeters, gyroscopes, speedometers etc.) as well as for operational tasks such as surveillance (e.g., cameras, microphones, radar, lidar etc.) or meteorology (e.g., barometers, moisture meters, thermometers, anemometers etc.). The processing capabilities required to handle input/output (“I/O”) data from all of these various sources may well exceed the capabilities of an economically feasible computing solution for a small form factor drone. In terms of security, it is much more likely in the case of a drone than in the case of a refrigerator that a malicious actor may gain access to a user’s drone without having access to the user’s person or home.

Virtualization allows computer systems to be quickly scaled to meet the processing demands of the moment, without paying for or wasting excess capacity that may not be needed. Typically, a multi-tenant cloud provider hosts many applications on many virtual machines belonging to many different tenants. Virtualization through the use of isolated guests such as virtual machines (“VMs”) or containers may allow a programmer to quickly scale the deployment of applications to the volume of traffic requesting the applications. VMs may be deployed in a variety of hardware environments. There may be economies of scale in deploying hardware in a large scale. A cloud provider may rent or sell excess computing capacity on extra hardware deployed to, for example, achieve per unit cost savings on hardware, or for the express purpose of creating a revenue stream from such rentals. A programmer may hire one or more cloud providers to provide contingent space for situations where the programmer’s applications may require extra compute capacity, becoming a tenant of the cloud provider. A tenant may flexibly launch more or less copies of virtual machines and more or less copies of applications in response to the ebb and flow of traffic. The cloud provider may be unaware of the specific contents of the traffic, for example, due to contractual privacy terms or encryption.

The present disclosure aims to address the design challenges for finding an optimal compute capacity for IoT endpoint devices by leveraging the scalability of cloud computing to enable intelligently assisted IoT endpoint devices. In an example, an IoT endpoint device may be configured such that a virtual endpoint service in a cloud environment is directly associated with the endpoint device. The virtual endpoint service may be configured to include virtual I/O components associated with a plurality of the physical I/O components (e.g., sensors or actuators) on the IoT endpoint device. By redirecting the output of physical sensors from the IoT endpoint device to corresponding virtual sensors in the virtualized endpoint service, the computing resources and scalability of the cloud may be leveraged to process the data feeds, with only specific instructions to specific interactive elements of the IoT endpoint device receiving instructions based on the processed results from the sensor feeds. In an example, the increased compute capabilities may be directly leveraged by existing control software for the IoT endpoint device where feeds from virtual and physical sensors are indistinguishable to control software executing on the virtualized endpoint service. In addition, in examples where sensor feeds are redirected by default, physical access to a disabled device would not pose any significant security risk related to any contents stored on the device since sensor data will have been redirected and would not be available even in a raw form on the device itself.

FIGS. 1A and 1B are block diagrams of an intelligently assisted IoT endpoint device system according to an example of the present disclosure. In an example, endpoint device **145** is an IoT endpoint device and virtualized endpoint service **140** is a virtual representation of endpoint device **145**. In the example, endpoint device **145** may be connected to network **115** and therefore to virtualized endpoint service **140** over a wireless connection. In an example, virtualized endpoint service **140** may execute on a VM inside of a local area network connected to network **115**. As illustrated in FIG. 1B, the system **100** may include one or more interconnected hosts (e.g., hosts **110A-B**). Each host **110A-B** may in turn include one or more physical processors (e.g., CPU **102A-C**) communicatively coupled to memory devices (e.g., MD **103A-C**) and input/output devices (e.g.,

I/O **105A-B**). As used herein, physical processor or processors (Central Processing Units “CPUs”) **102A-C** refer to devices capable of executing instructions encoding arithmetic, logical, and/or I/O operations. In one illustrative example, a processor may follow Von Neumann architectural model and may include an arithmetic logic unit (ALU), a control unit, and a plurality of registers. In an example, a processor may be a single core processor which is typically capable of executing one instruction at a time (or process a single pipeline of instructions), or a multi-core processor which may simultaneously execute multiple instructions. In another example, a processor may be implemented as a single integrated circuit, two or more integrated circuits, or may be a component of a multi-chip module (e.g., in which individual microprocessor dies are included in a single integrated circuit package and hence share a single socket). A processor may also be referred to as a central processing unit (CPU).

As discussed herein, a memory device **103A-C** refers to a volatile or non-volatile memory device, such as RAM, ROM, EEPROM, or any other device capable of storing data. As discussed herein, I/O device **105A-B** refers to a device capable of providing an interface between one or more processor pins and an external device, the operation of which is based on the processor inputting and/or outputting binary data. CPUs **102A-C** may be interconnected using a variety of techniques, ranging from a point-to-point processor interconnect, to a system area network, such as an Ethernet-based network. Local connections within each host **110A-B**, including the connections between a processor **102A** and a memory device **103A-B** and between a processor **102A** and an I/O device **105A** may be provided by one or more local buses of suitable architecture, for example, peripheral component interconnect (PCI).

In computer systems (e.g., system **100**), it may be advantageous to scale application deployments by using isolated guests such as virtual machines and containers that may be used for creating hosting environments for running application programs. Typically, isolated guests such as containers and virtual machines may be launched to provide extra compute capacity of a type that the isolated guest is designed to provide. Isolated guests allow a programmer to quickly scale the deployment of applications to the volume of traffic requesting the applications as well as isolate other parts of system **100** from potential harmful code executing within any one virtual machine. In an example, a VM may be a robust simulation of an actual physical computer system utilizing a hypervisor or a component (e.g., a virtual machine manager) that executes tasks commonly executed by hypervisors to allocate physical resources to the virtual machine. In an example, each of virtualized endpoint services **130**, **132**, **134**, and **140** may execute on one or more VMs. In some examples, each virtualized endpoint service executes on a dedicated VM. In an example, endpoint control service **110** executes on at least one VM, and the number of VMs endpoint control service **110** executes on scales based on the processing needs of endpoint control service **110**. In an example, virtualized endpoint services **130**, **132**, **134**, and **140** may execute on containers. In another example, subcomponents of virtualized endpoint service **140** (e.g., virtual sensors **161** and **163**, virtual interactive element controllers **166** and **168**, and virtualized endpoint engine **155**) may execute on containers on a VM executing virtualized endpoint service **140**. In an example, various components of endpoint control service **110** may execute on containers, and the quantity of containers executing as any particular component may be scaled dynamically.

In an example, containers executing various components of endpoint control service **110** may be organized into microservices.

In an example, hosts **110A-B** may run one or more isolated guests in the form of VMs hosting virtualized endpoint services **130**, **132**, **134**, **140** and endpoint control service **110**, by executing a software layer (e.g., hypervisor **114**) above the hardware and below the VMs, as schematically shown in FIG. 1B. In an example, the hypervisor **114** may be components of the host operating system **112** executed by the system **100**. In another example, the hypervisor **114** may be provided by an application running on host operating system **112**, or may run directly on the hosts **110A-B** without an operating system beneath it. The hypervisor **114** may virtualize the physical layer, including processors, memory, and I/O devices, and present this virtualization to the VMs hosting virtualized endpoint services **130**, **132**, **134**, **140** and endpoint control service **110** as devices, including virtual processors (“VCPUs”), virtual memory devices (“VMDs”), virtual I/O devices (“VIOs”), and/or guest memory. In an example, a virtualized endpoint service **140** may be hosted a virtual machine and may execute a guest operating system (“OS”) which may utilize the underlying virtual central processing unit, virtual memory device, and virtual input/output devices (e.g., virtual sensors **161** and **163**, and virtual interactive element controllers **166** and **168**). Processor virtualization may be implemented by the hypervisor **114** scheduling time slots on one or more physical processors **102A-C** such that from the guest operating system’s perspective those time slots are scheduled on a virtual processor.

A VM hosting virtualized endpoint service **140** may run on any type of dependent, independent, compatible, and/or incompatible applications on the underlying hardware and host operating system **112**. In an example, a guest OS and applications (e.g., virtualized endpoint engine **155**, virtual sensors **161** and **163**, and virtual interactive element controllers **166** and **168**) running on the VM hosting virtualized endpoint service **140** may be independent of the underlying hardware and/or host operating system **112**. Additionally, any guest OS and applications (e.g., virtualized endpoint engine **155**, virtual sensors **161** and **163**, and virtual interactive element controllers **166** and **168**) may be incompatible with the underlying hardware and/or host operating system **112**. The hypervisor **114** manages memory for the host operating system **112** as well as memory allocated to the VM and guest operating system the VM hosting virtualized endpoint service **140**. In an example, the VMs hosting virtualized endpoint services **130**, **132**, and **134** may be other virtual machine similar in configuration to the VM hosting virtualized endpoint service **140**. In some examples, various components of system **100**, for example, host **110A** and host **110B** may reside over a network from each other, which may be, for example, a public network (e.g., the Internet), a private network (e.g., a local area network (LAN) or wide area network (WAN)), or a combination thereof.

In an example, each virtualized endpoint service (e.g., virtualized endpoint services **130**, **132**, **134**, and **140**) are associated with a respective endpoint device (e.g., endpoint devices **120**, **122**, **124**, **126**, and **145**). In some examples, each virtualized endpoint service is uniquely associated with an endpoint device (e.g., virtualized endpoint service **130** with endpoint device **120**, virtualized endpoint service **132** with endpoint device **122**, virtualized endpoint service **134** with endpoint device **124**, and virtualized endpoint service **140** with endpoint device **145**). In some examples, an endpoint device (e.g., endpoint device **126**) may lack a direct

connection to network **115** and may connect to network **115** through another endpoint device (e.g., endpoint device **122**). In some examples, endpoint device **126** may have its own virtualized endpoint service. In an example, virtualized endpoint service **132** may host a second virtualized endpoint service within virtualized endpoint service **132** to be associated with endpoint device **126**. In another example, virtualized endpoint service **132** may additionally redirect I/O data to and from endpoint device **126** to another VM hosting another virtualized endpoint service. In an example, network **115** may be a public network (e.g., the Internet), a private network (e.g., a local area network (LAN) or wide area network (WAN)), or a combination thereof. In an example, virtualized endpoint services **130**, **132**, **134**, and **140**, endpoint control service **110**, host OS **112**, hypervisor **114**, and hosts **110A-B** may all be in the same cloud, which may be a public or a private cloud. In an example, communications between each of virtualized endpoint services **130**, **132**, **134**, and **140**, endpoint control service **110**, host OS **112**, hypervisor **114**, and hosts **110A-B** may be secured (e.g., by encryption and/or obfuscation) against other members of the cloud and/or the public at large. In some examples, one or more of virtualized endpoint services **130**, **132**, **134**, and **140**, endpoint control service **110** may be hosted on forms of virtualization other than full virtual machines. For example, virtualized endpoint services **130**, **132**, **134**, and **140**, endpoint control service **110** may be hosted on containers.

In an example, each endpoint device (e.g., endpoint devices **120**, **122**, **124**, **126**, and **145**) may include a variety of components. For example as illustrated in FIG. 1A, endpoint device **145** may include a plurality of sensors (e.g., sensors **160** and **162**), a plurality of interactive elements (e.g., interactive elements **165** and **167**), one or more processors (e.g., endpoint processor **150**), and a network interface **190**. In an example, sensors **160** and **162** may be any type of device that allows endpoint device **145** to make measurements (e.g., a camera, a microphone, an accelerometer, an antenna, a battery life sensor, a compass, a Global Positioning System® (“GPS”) sensor, a gyroscope, and a radio). In an example, interactive elements are components of an endpoint device capable of producing a physical manipulation of an endpoint device or its surroundings. For example, interactive elements **165** and **167** may be actuators that control a physical sensor (e.g., sensors **160** and **162**) thereby changing the measurements received from that sensor (e.g., altering an orientation, a focus or a mode of the sensor). In an example, endpoint device **145** may be a robotic vehicle, a drone or a robotic device that is mobile. In such an example, interactive elements **165** and **167** may be components granting endpoint device **145** mobility (e.g., a propeller, a wheel, a tread track, a motor, a jet engine, a magnetic levitation system, a gyroscope stabilizer, a braking system, and a steering system). In an example, endpoint device **145** is associated with a virtualized endpoint service **140**, and virtualized endpoint service **140** is dedicated to endpoint device **145**. In an example, each interactive element (e.g., interactive elements **165** and **167**) in endpoint device **145** is associated with a respective virtual interactive element controller (e.g., virtual interactive element controllers **166** and **168**) in virtualized endpoint service **140**. In an example, each interactive element is associated with a dedicated virtual interactive element controller (e.g., interactive element **165** with virtual interactive element controller **166**, and interactive element **167** with virtual interactive element controller **168**). In some examples, one virtual interactive element controller may be associated with and control multiple similar interactive elements (e.g., one inter-

active element controller to control the rotational speed of all four wheels in a robotic vehicle rather than a separate interactive element controller for each wheel).

As illustrated in FIG. 1A, endpoint device **145** may be communicatively coupled with virtualized endpoint service **140** through network **115**. In an example, network **115** may include one or more transmissions, and may include both wired and wireless communications and any combination thereof. In an example, sensor output **170** is raw sensor data collected by sensors **160** and **162**, which may be redirected by endpoint processor **150** as redirected sensor output **172** to network interface **190** for transmission to virtualized endpoint service **140**. In an example, redirected command **184** is a command to interactive elements **165** and/or **167** by virtual interactive element controllers **166** and/or **168**. In an example, endpoint processor **150** receives redirected command **184** and issues an action command **186** to interactive element **165**. In an example redirected command **184** may be in a similar form to an instruction endpoint processor **150** may receive from an onboard controller for interactive element **165**. In the example, action command **186** may be in a form that is compatible with interactive element **165**, and may result from a reinterpretation of redirected command **184**. In another example, action command **186** may be an unchanged version of redirected command **184**, where endpoint processor **150** routes messages to ensure that the proper interactive element (e.g., interactive element **165**) receives redirected command **184**.

In an example as shown in FIGS. 1A and 1B, sensor **160** may be associated with virtual sensor **161**, and sensor **162** may be associated with virtual sensor **163**. In the example, redirected sensor output **172** is received by virtualized endpoint service **140**, where the portion of redirected sensor output **172** that corresponds to sensor **160** may be received by virtual sensor **161**, and the portion of redirected sensor output **172** that corresponds to sensor **162** may be received by virtual sensor **163**. In an example, virtual sensors **161** and **163** may then output the data received in redirected sensor output **172** as redirected sensor output **174** to virtualized endpoint engine **155**. In an example, virtualized endpoint engine **155** may interpret virtual sensors **161** and **163** to be physical sensors **160** and **162**. In an example, virtualized endpoint engine **155** may convert redirected sensor output **174** to converted sensor output **176**, where the conversion process includes interpreting raw data from redirected sensor output **174** into a form consumable by endpoint control service **110**. In an example, endpoint control service **110** issues a command **180** based on converted sensor output **176**; with command **180** being redirected by virtualized endpoint engine **155** as redirected command **182** to virtual interactive element controller **166**. In an example, virtual interactive element controller **166** may reinterpret redirected command **182** into a format compatible with endpoint processor **150** before transmitting the reinterpreted redirected command **182** as redirected command **184**. In an example, redirected command **182** may be in general form, (e.g., move forward), while redirected command **184** may be more specific instructions (e.g., spin wheels at 1000 revolutions per minute for 2 seconds).

In an example, virtualized endpoint service **140** may be a complete virtual representation of each component of endpoint device **145** capable of generating electronic output data or receiving electronic input data. In the example control software that may control endpoint device **145** directly, may execute on virtualized endpoint service **140** and control endpoint device **145** indirectly with little to no modifications. In an example, virtualized endpoint service

140 may appear to the control software as if virtualized endpoint service **140** was in fact endpoint device **145**. In the example, various components (e.g., virtual interactive element controllers **166** and **168**) of virtualized endpoint service **140**, rather than executing instructions from the control software directly, may instead seamlessly pass those instructions onto corresponding physical components in endpoint device **145** (e.g., interactive elements **165** and **167**).

FIG. 2 is a block diagram of connectivity redundancy for intelligently assisted IoT endpoint devices according to an example of the present disclosure. System **200** may be a broader system including system **100** illustrating networking components (e.g., wireless access points **212** and **217**, and wireless signal ranges **210** and **215**) that allow various endpoint devices (e.g., endpoint devices **120**, **122**, **124**, **126**, **145**, **212**, **220**, and **222**) to connect to their respectively associated virtualized endpoint services (e.g., virtualized endpoint services **132**, **134**, **140**, and **230**). In an example, intelligently assisted IoT endpoint devices may be heavily reliant on active network connectivity to advantageously benefit from the computing power of the endpoint control service **110**. In an example, virtualized endpoint services **130**, **132**, **134**, **140**, **230**, etc., along with endpoint control service **110** may reside within a local area network provided by cloud services provider **280**. In the example, a gateway for cloud services provider **280** allows the virtualized endpoint services to access network **115**. In an example, wireless access points **212** and **217** are additional gateways connected to network **115**. For example, wireless access points **212** and **217** may be any form of wireless gateway (e.g., WiFi, wiMAX, cellular data, and radio). In an example, wireless access point **212** has a wireless signal range **210**, and wireless access point **217** has a wireless signal range **215**. In an example, wireless signal range **210** and wireless signal range **215** may or may not overlap with each other. In an example, endpoint devices **120**, **122**, **124**, **145**, **212**, and **220** are physically within wireless signal range **210**, and endpoint device **222** is physically within wireless signal range **215**. In an example, endpoint device **126** is not physically within either wireless signal range **210** or wireless signal range **215**. In the example, endpoint device **126** may connect to another endpoint device (e.g., endpoint device **122**, **220**, or **222**) if endpoint device **126** is within wireless transmission range of any one of endpoint devices **122**, **220** or **222**. In an example, endpoint device **126** may connect to endpoint devices **122**, **220** and/or **222** through any connection type, wired or wireless (e.g., personal area networking, local area networking, metropolitan area networking or wide area networking). In an example, endpoint device **126** may use an onboard radio to connect to endpoint devices **122**, **220** and/or **222**. In an example, by connecting to endpoint devices **122**, **220** and/or **222**, endpoint device **126** may connect to network **115** indirectly even though endpoint device **126** is not physically within the wireless signal ranges **210** or **215**. In an example, endpoint device **126** may connect to more than one of endpoint devices **122**, **220** and/or **222** for redundancy, reliability, and/or security. In an example, endpoint device **126** may have an active network connection to its associated virtualized endpoint service (e.g., virtualized endpoint service **230**) by connecting through endpoint devices **122**, **220**, and/or **222**. In an example, endpoint devices **122**, **220** and/or **222** may act as a relay for endpoint device **126** by forwarding network transmission packets between endpoint device **126** and virtualized endpoint service **230** without any modification to the data included in the network transmission packets. In an example, virtualized endpoint service **230** may

connect directly to endpoint devices **122**, **220** or **222**. In another example, virtualized endpoint service **230** may connect to endpoint devices **122**, **220** and/or **222** through a virtualized endpoint service respectively associated with endpoint devices **122**, **220** and/or **222** (e.g., virtualized endpoint service **132** associated with endpoint device **122**). In an example, endpoint device **126** may be connected to network **115** through multiple indirect connections through multiple other endpoint devices so long as at least one of the endpoint devices is physically within a wireless signal range (e.g., wireless signal range **210** and **215**) of a wireless access point (e.g., wireless access point **212** and **217**) connected to network **115**.

FIG. 3 is a flowchart illustrating an example of intelligently assisting an IoT endpoint device system according to an example of the present disclosure. Although the example method **300** is described with reference to the flowchart illustrated in FIG. 3, it will be appreciated that many other methods of performing the acts associated with the method **300** may be used. For example, the order of some of the blocks may be changed, certain blocks may be combined with other blocks, and some of the blocks described are optional. The method **300** may be performed by processing logic that may comprise hardware (circuitry, dedicated logic, etc.), software, or a combination of both. In an example, the method is performed by a virtualized endpoint service **140** in communication with an endpoint device **145**.

The example method **300** may begin with an endpoint processor on an endpoint device determining that the endpoint device has an active network connection (block **310**). In an example, endpoint device **145** may determine that it has an active network connection to network **115**. For example, endpoint device **145** may attempt to access virtualized endpoint service **140** through communications protocols loaded to endpoint device **145** during an initialization process. In an example, endpoint device **145** may employ specialized encryption and/or obfuscation on its network traffic to and from virtualized endpoint service **140**, including any required authentication protocols. In an example, endpoint device **145** may be a flying drone with a camera sensor **160**.

In an example, responsive to determining that the endpoint device has an active network connection, input/output data from a plurality of sensors of the endpoint device including a first physical sensor are redirected to a network interface (block **315**). For example, endpoint device **145** may attempt to establish a secure communication session with virtualized endpoint service **140** over network **115**. Upon confirmation that the secure communication session has been established, endpoint device **145** may begin to redirect input/output data (e.g., sensor output **170**) collected by sensors **160** and **162** to network interface **190**. In an example, endpoint processor **150** makes the determination to begin redirection of I/O data. In an example, endpoint processor **150** redirects raw data from sensors **160** and **162** (e.g., a binary data stream) to network interface **190** without further interpretation.

The example method **300** may then continue with a first virtual sensor of the virtualized endpoint receiving first redirected data collected by the first physical sensor over a network, where the first virtual sensor is associated with the first physical sensor, and the first redirected data is part of the input/output data redirected by the first endpoint device (block **320**). In an example, part of sensor output **170** is the sensor output of sensor **160**. In the example, virtual sensor **161** receives the part of sensor output **170** originating from sensor **160** over network **115**. In an example, virtual sensor

161 is a dedicated receiving point for sensor data from sensor **160**, which is a physical sensor on endpoint device **145**. In an example, network interface **190** may encrypt and/or obfuscate data before transmitting the data to virtualized endpoint service **140**. In an example, virtual sensor **161** may include all of the I/O states of physical sensor **160**, and may serve as a surrogate for all I/O processing directed towards physical sensor **160**. In an example, virtual sensor **161** may be indistinguishable from physical sensor **160** to a virtualized endpoint engine **155**.

In an example, the first virtual sensor outputs the first redirected data to a first virtualized endpoint engine (block **325**). For example, virtual sensor **160** may output redirected sensor output **174** to virtualized endpoint engine **155**. In the example, redirected sensor output **174** may be the same data as sensor output **170**. In the example, virtualized endpoint service **140** may have removed all of the modifications performed on the data stream of sensor output **170** to prepare the data for network transmission (e.g., packetizing, encrypting, and obfuscating). In an example, part of redirected sensor output **172** may have been flagged with virtual sensor **161** as a destination. In an example, for programming purposes, virtualized endpoint engine **155** may interact with virtual sensor **161** as if virtual sensor **161** were physical sensor **160**, and any messages sent between virtual sensor **161** and virtualized endpoint engine **155** are seamlessly forwarded between virtual sensor **161** and physical sensor **160**. In an example, virtual sensor **161** may appear to be physical sensor **160** to virtualized endpoint engine **155**.

In an example, the virtualized endpoint engine converts the first redirected data into a first converted data compatible with an endpoint control service (block **330**). For example, virtualized endpoint engine **155** may receive redirected sensor output **174**, and convert redirected sensor output **174** into converted sensor output **176**. In an example, redirected sensor output **174** may be a stream of bits from a camera sensor **160**, while converted sensor output **176** may be an encoded video file of the same data. In an example, after the conversion process, the virtualized endpoint engine sends the first converted data to the endpoint control service (block **335**). For example, virtualized endpoint engine **155** may send converted sensor output **176** to endpoint control service **110**.

Endpoint control service **110** may be any system or combination of systems performing the functionality of an endpoint control service. In an example, endpoint control service **110** provides the processing capabilities to parse incoming data in the form of converted sensor output **176**. In an example, endpoint control service **110** may be able to provide vastly superior data processing capabilities compared to an onboard processor. For example, a fully autonomous drone with an onboard navigation and autopilot suite may be cost prohibitive from a computing standpoint, or may have its effective range or payload cut to an unacceptable extent by extra size and weight for batteries and processor equipment. In such an example, a potential trade-off may be a diminished capability to operate in inclement weather. A similar drone operating as an intelligently assisted IoT endpoint device may, however, require even less processing power onboard (as the endpoint processor is only required to package data for network transmission and to route response commands to the proper interactive elements). The intelligently assisted drone, may be able to take off and fly in significantly worse weather because the endpoint control service may be able to process many more data points from various sensors to keep the drone afloat. Similarly, the endpoint control service may have other data

sources that may be used to better calculate an optimal course of action, for example, weather reports may be incorporated to find more optimal routes. In an example, an endpoint control service may also factor in sensor input from other endpoint devices in close proximity (e.g., sensor data from another drone that shows clear skies at a slightly higher altitude).

In some examples, endpoint control service **110** may further record some of converted sensor output **176**. In an example where endpoint device **145** is a surveillance drone, for example, part of a security system patrolling a home or corporate property, the video feed from a camera sensor **160** may be stored after being converted to a standard video file by virtualized endpoint engine **155**. In an example, sensor **162** may be a GPS location sensor, periodic location information resulting from sensor **162** may also be stored after being processed by virtualized endpoint engine **155**. In an example, a drone with little onboard intelligence and minimal onboard storage may be preferred for tasks where losing the drone with data onboard may be problematic. For example, if a drone were to record video of its flight path onboard, a malicious actor who intercepts the drone may be able to discern a route that is no longer covered by drone surveillance based on stored video of the drone's flight path if the video storage was onboard. In an example, a drone whose surveillance footage requires downloading from onboard storage may have its purpose defeated if the drone were to be tampered with in flight, as the data including the tamperer's identity may well be lost. In another example, if a drone were being used to deliver packages, it would be disadvantageous for someone who finds a disabled drone to be able to find the location and types of packages previously delivered by the drone by accessing internal memory. Likewise, for an IoT endpoint device like a driverless automobile, it may well be disadvantageous from a security standpoint if the onboard storage and guidance systems included too much data regarding a user's typical travels. For example, in the case of a vehicle stolen from an airport parking lot, such information may indicate the owner's residence and divulge that the owner is away from home. In some examples, an owner may want ownership information for their endpoint device labeled on the endpoint device in case the endpoint device becomes lost. However, in many situations, an owner may not want to divulge personal information such as an address, and may rather have the non-transitory storage for the endpoint device reside in the cloud rather than on the endpoint device.

The virtualized endpoint engine may receive a first command from the endpoint control service (block **340**). In an example, endpoint control service **110** may process the converted sensor output **176**, and based at least in part on the data received in converted sensor output **176**, the endpoint control service **110** may generate a command **180**. In an example, endpoint control service **110** may be a specialized controller for a particular type of endpoint device. In another example, endpoint control service **110** may be a combination of various modules each responsible for specific types of converted sensor outputs. For example, endpoint control service **110** may include application programming interfaces ("APIs") for controlling a variety of different types of I/O data. In an example, endpoint control service **110** may receive configuration settings from these APIs. For example, endpoint control service **110** may process visual inputs (e.g., from a camera sensor **160**). In the example, endpoint control service **110** may include components specific to the type of camera sensor of camera sensor **160**. In the example, endpoint control service **110** may also include a visual API for

configuring visual input settings. In some examples, the visual API may be a generic visual API capable of interfacing with a variety of type specific camera sensor interface components. In an example, endpoint control service **110** may determine that a closer view of a target object is required. In an example, endpoint control service may issue a command to zoom in camera sensor **160**. In such an example, the interactive element responding to a command may actually be a component part of the sensor (e.g., camera sensor **160**) whose data feed has been redirected. In another example, endpoint control service may issue a command for endpoint device **140** to move closer to the target. In various examples, endpoint control service **110** may include a variety of modules based on expected redirected data types from endpoint device **140**, including visual, audio, and navigational data types. In an example, endpoint control service **110** may also include visual, audio and navigational APIs. In some examples, endpoint control service **110** may integrate data from a plurality of endpoint devices (e.g., constructing a three dimensional representation of a target object by merging visual data from multiple camera sensors on multiple endpoint devices). In some examples, the endpoint control service may issue an additional command to a second endpoint device (e.g., based on sensor data from the first endpoint device (e.g., endpoint device **145**)).

In an example, each virtualized endpoint service (e.g., virtualized endpoint services **130**, **132**, **134**, **140**, and **220**) may be associated with a separate API. In an example, endpoint devices of the same type may be controlled with copies of the same API. For example, one copy of the API acts as an interface to control virtualized endpoint service **130**, and a second copy of the API acts as an interface to control virtualized endpoint service **140**. In an example, a user interface may be constructed interfacing with various copies of the API as required to provide a user interface capable of controlling multiple endpoint devices. For example, a user interface for surveillance drone endpoint devices may interface with a first copy of the API to control a first drone and a second copy of the API to control a second drone. In the example, the user interface may allow an operator to take direct control of the drone through the endpoint control service **110**. In an example, one copy of the API may control multiple endpoint devices (e.g., where the API is associated with endpoint control service **110**). In an example, the API may be an interface to the endpoint control service **110**, which may in turn process data streams and actions for multiple endpoint devices of the same or different types working in concert.

The virtualized endpoint engine may send the first command to a first virtual interactive element controller associated with a first interactive element of the endpoint device (block **345**). In an example, an endpoint device may have one or more interactive elements that may effect a change to the endpoint device or the endpoint device's surroundings. In an example, interactive element **165** may be a component related to the mobility of endpoint device **145**. In such an example, virtualized endpoint engine **155** may relay a command **180** as redirected command **182** to a virtual interactive element controller **166**. In an example, virtual interactive element controllers **166** and **168** may each be responsible for interpreting commands from endpoint control service **110** for an interactive element in endpoint device **145**. For example, command **180**, and redirected command **182** may both be in a generic form (e.g., increase altitude to thirty meters). In the example, virtual interactive element controller **166** may process the generic redirected command **182** into specific instructions (e.g., rotate faster) to a propeller

(e.g., interactive element 165) in endpoint device 145. In the example virtual interactive element controller 166 may be a virtual representation of interactive element 165. For example, virtualized endpoint engine 155 may believe it is sending a command to a physical interactive element (e.g., interactive element 165) when virtualized endpoint engine 155 sends redirected command 182 to virtual interactive element controller 166. In an example, the amount of reinterpretation required of virtual interactive element controller 166 depends on the specificity and compatibility of the command 180 issued by endpoint control service 110 with interactive element 165. In an example, command 180 may be identical to redirected command 182, with virtualized endpoint engine 155 solely responsible for routing command 180 to the proper virtual interactive element controller without modification to command 180.

In an example, the virtual interactive element controller converts the first command into a second command compatible with the first interactive element (block 350). For example, virtual interactive element controller 166 may convert command 180 and/or redirected command 182 into a form compatible with interactive element 165. In an example, virtual interactive element controller 166 may convert redirected command 182 into redirected command 184, where redirected command 184 includes more specific implementation instructions than redirected command 182. For example, redirected command 184 may indicate “increase altitude to thirty meters” while redirected command 184 may indicate “increase rotation speed of a propeller to 2000 revolutions per minute and then decrease rotation speed to 1000 revolutions per minute after an altimeter reading of twenty-eight meters is reached.” In some examples (e.g., where endpoint control service 110 lacks a specific interface for endpoint device 145), more interpretation of commands from endpoint control service 110 may be necessary by virtual interactive element controller 166. In other examples (e.g., where endpoint control service 110 includes components for specifically outputting commands and/or instructions for endpoint device 145 and/or interactive element 165), virtual interactive element controller 166 may need to perform little or even no conversion to the contents of commands (e.g., command 180) from endpoint control service 110. In some examples, endpoint control service 110 may directly output a binary bit stream of instructions compatible with interactive element 165. In such examples, virtual interactive element controller 166 may serve as a surrogate for receiving the binary bit stream instructions intended for interactive element 165, and virtual interactive element controller 166 may convert the bit stream instructions into a format that may be transmitted over network 115. For example, virtual interactive element controller 166 may packetize command 180 into individual command messages that may then be transmitted with Internet Protocol (“IP”), Transmission Control Protocol (“TCP”), User Datagram Protocol (“UDP”) or any other networking protocol.

The virtualized endpoint service may send the second command over the network causing the first interactive element to perform a first task (block 355). For example, virtualized endpoint service 140 may send a version of command 180 or redirected command 182 that has been converted by virtual interactive element controller 166 into a format compatible with interactive element 165 to endpoint device 145. For example, the output from virtual interactive element controller 166 may be redirected command 184, which may be received by network interface 190 on endpoint device 145. In an example, redirected command

184 may be routed by endpoint processor 150 to interactive element 165 in the form of action command 186. In various examples, endpoint processor 150 may perform varying degrees of processing on redirected command 184. Where endpoint control service 110 has a specific integration with interactive elements of the same type as interactive element 165, endpoint processor 150 may simply need to route redirected command 184 to interactive element 165 with no changes to the contents of the command. In an example, endpoint processor 150 may be capable of processing sensor data (e.g., sensor output 170) into action commands (e.g., action command 186) without redirection through network interface 190 when no network connection is available. In an example, endpoint processor 150 may be constrained with regards to the complexity of the processing of sensor output or action commands (e.g., being limited to continuing the last directive received from a virtualized endpoint service and/or entering a failsafe mode). In an example, the first task may be to take a closer picture of a target, which may be achieved in multiple ways. For example, command 180 may instruct endpoint device 145 to move closer to the target, or command 180 may instruct endpoint device 145 to zoom in with camera sensor 160.

In an example, the first virtual sensor receives second redirected data collected by the first physical sensor over the network, where the second redirected data is different from the first redirected data as a result of performing the first task (block 360). In an example, performing the first task (e.g., moving closer to a target or zooming in with a camera sensor) may change the image received by camera sensor 160. In the example, as a result of performing the first task based on the chain of redirected and interpreted commands originating from command 180 from endpoint control service 110, camera sensor 160 begins to receive a fresh data feed different from the data feed in sensor output 170 (e.g., a closer view of the target is now collected). In an example, the fresh data feed is also redirected to the virtual endpoint service 140. In an example, the fresh data feed completes a feedback loop for endpoint control service 110, by presenting endpoint control service 110 with a result of command 180. In an example, by performing the first task, endpoint device 145 produces a physical change to the endpoint device 145 (e.g., focusing a lens or changing a propeller speed) and/or the local environment surrounding the endpoint device 145 (e.g., thrust from a higher propeller speed or shining a light for a better image capture). In an example, a plurality of sensors on endpoint device 145 may simultaneously redirect their output data to virtualized endpoint service 140, and a plurality of commands may be issued by endpoint control service 110 based on the redirected data. For example, data feeds may simultaneously be redirected for a camera, an altimeter, and a GPS system. In the example, broad navigation commands may be issued based on the GPS system, while zoom and focus commands may be issued to the camera. The altimeter feed may be monitored as a safety mechanism to alert if altitude drops below a certain threshold.

FIGS. 4A and 4B are flow diagrams illustrating an intelligently assisted IoT endpoint device process according to an example of the present disclosure. Although the examples below are described with reference to the flowchart illustrated in FIGS. 4A and 4B, it will be appreciated that many other methods of performing the acts associated with FIGS. 4A and 4B may be used. For example, the order of some of the blocks may be changed, certain blocks may be combined with other blocks, and some of the blocks described are optional. The methods may be performed by processing

logic that may comprise hardware (circuitry, dedicated logic, etc.), software, or a combination of both. In example system 400, a virtualized endpoint service 490 and an endpoint control service 110 provide intelligent assistance for IoT endpoint device 495.

Endpoint device 495 may power on and connect to network 115 (block 410). In an example, endpoint device 495 may be pre-configured during manufacturing to be coupled with a virtualized endpoint service 490. In another example, endpoint device 495 may be functional without a network connection to virtualized endpoint service 490, but may rely on an association to virtualized endpoint service 490 for at least part of its features (e.g., some features may be unavailable without a network connection). In an example, virtualized endpoint service 490 may detect that its associated endpoint device 495, in this case a robotic cleaning unit, has powered on (block 412). In an example, virtualized endpoint service 490 may detect that endpoint device 495 has powered on based on a transmission from endpoint device 495 (e.g., a request to start a communication session). In another example, endpoint device 495 may begin attempting to forward sensor data to virtualized endpoint service 490 as soon as it powers on.

In an example, virtualized endpoint service 490 may request endpoint control service 110 to provide a task for endpoint device 495 to carry out (block 414). In various examples, the request for an initial task may or may not include any forwarded sensor data. In response to the request, endpoint control service 110 may issue a command for endpoint device 495 to begin vacuuming in a straight line (block 416). In an example, the command from endpoint control service 110 may be generic, and may rely on components of virtualized endpoint service 490 (e.g., virtual interactive element controllers) to be interpreted. In an example, virtualized endpoint service 490 converts the command to a format compatible with endpoint device 495 (block 418). In other examples, endpoint control service 110 may issue a command that is ready to be implemented by an interactive element with components of virtualized endpoint service 490 primarily providing routing for the command. In an example, an interactive element may be wheels, tracks, or the drive train of endpoint device 495. In various examples, regardless of how much conversion of the command is necessary, virtualized endpoint service 490 may relay the converted command to endpoint device 495 (block 420). In most examples, virtualized endpoint service 490 will at a minimum package the command into a network transmission protocol compatible with endpoint device 495.

In an example, endpoint device 495 may be equipped with a floor type sensor. For example, the floor type sensor may detect a smoothness value of the floor under endpoint device 495. In an example, upon connecting to virtualized endpoint service 490, the sensor data from floor type sensor has been forwarded to virtualized endpoint service 490, and redirected to endpoint control service 110. In an example, the floor type sensor is continually taken for the smoothness of the ground under the endpoint device (block 422). In an example, endpoint device 495 does minimal processing to the sensor readings (e.g., only packaging the readings for network transmission). In the example, the floor type sensor output is redirected to virtualized endpoint service 490 (block 424). For example, due to the minimal processing taking place, the only latency observed is the network latency for the transmissions. In an example, due to leveraging a global multi-tenant cloud environment to host virtualized endpoint service 490 and endpoint control service 110, endpoint device 495 may be physically close enough to

virtualized endpoint service 490 and endpoint control service 110 for latency to be under 20 ms. In an example, virtualized endpoint service 490 may convert the floor type sensor output to a format compatible with endpoint control service 110 (block 426). In the example, virtualized endpoint service 490 may include a driver (e.g., a virtual sensor associated with the floor type sensor) specifically configured to process the output of the specific type of floor type sensor equipped in endpoint device 495. In the example, the virtual sensor may convert raw data into a generically scaled reading.

The endpoint control service 110 may process the floor type sensor's output, and determine that endpoint device 495 has moved from carpet to hardwood flooring (block 428). In an example, floor type sensor output may include various compression and/or resistance data. In an example, based on the processed sensor output, endpoint control service 110 issues a command to retract brushes and increase suction on endpoint device 495 (block 430). In the example, brushes may potentially, for example, damage the finish on hardwood flooring, but extra suction may be needed to clean satisfactorily without brushing. In an example, high suction on carpet may be strong enough to slow down or stop the mobility of the endpoint device 495 as fibers clog the intake. In an example, endpoint device 495 may also report data on the amount of suction currently being used as well as the relative amount of power currently required for mobility, which may be additional factors considered by endpoint control service 110 to determine floor type and proper suction levels. In an example, virtualized endpoint service 490 converts the command into an endpoint device compatible format (block 432). In the example, the command may be routed to two or more virtual interactive element controllers, for example, one for controlling suction and one for controlling an actuator that raises and lowers brushes. In an example, the various virtual interactive element controllers may be drivers configured to interface with the specific versions of interactive elements equipped on endpoint device 495 (e.g., the type of brush and suction component on endpoint device 495). The various virtual interactive element controllers may then package the converted commands for network transmission. The packaged converted commands may then be relayed to endpoint device 495 (block 434). Based on receiving the commands, endpoint device 495 (specifically interactive elements for brush height and suction power) may retract brushes and increase suction (block 436). A roundtrip latency from the time sensor output is redirected to virtualized endpoint service 490 to endpoint device 495 retracting brushes and increasing suction may be in the order of 20 ms to 100 ms while network 115 operates under optimal to normal conditions.

In an example, endpoint device 495 has an additional camera sensor, which takes a sensor reading (block 440). In the example, the camera feed output is redirected to virtualized endpoint service 490 (block 442). Virtualized endpoint service 490 converts the camera feed output to an endpoint control service 110 compatible format (block 444). In an example, the data feed from the camera sensor may be raw image files, which virtualized endpoint service 490 (specifically a virtual sensor in virtualized endpoint service 490) may convert to a standard video file format for endpoint control service 110. In an example, endpoint control service 110 may process the camera output and determine that a doorway is open (block 446). In the example, the endpoint control service 110 may issue a command for endpoint device 495 to continue vacuuming through the doorway (block 448). Virtualized endpoint service 490 may then

convert the command to an endpoint device 495 compatible format (block 452). For example, an virtual interactive element controller in virtualized endpoint service 490 may be associated with an interactive element on endpoint device 495 that controls steering. Virtualized endpoint service 490 may then relay the converted command to a steering component and drive train of endpoint device 495 (block 454). In the example, the steering component and drive train may be two or more interactive elements of endpoint device 495, associated with virtualized interactive element controllers in virtualized endpoint service 490. As a result of the commands, endpoint device 495 may approach the doorway (block 456).

In an example, endpoint device 495 may be equipped with an ultrasound based collision detection sensor (e.g., a sonar device). Endpoint device 495 may redirect the ultrasound sensor feed to virtualized endpoint service 490 (block 458). In an example, the ultrasound sensor feed may be a safety feature, and endpoint device 495, while relying on endpoint control service 110 for detailed processing of the ultrasound sensor feed, may be configured to immediately come to a stop if a collision is detected to be imminent (e.g., the ultrasound signal's echo is received in under a certain critical threshold of time). In an example, certain safety features may include backup components for temporary actions before commands may typically return from a virtualized endpoint service. The virtualized endpoint service 490, upon receiving the redirected ultrasound sensor feed, may convert the ultrasound sensor feed to an endpoint control service 110 compatible format (block 460). In an example, endpoint control service 110 may then process the ultrasound output to determine that a glass door is actually shut in the doorway (block 462). In an example, endpoint control service 110 may issue a command for endpoint device 495 to turn around and return to its charging station (block 464). Virtualized endpoint service 490 may convert the command to an endpoint device 495 compatible format (block 466). In an example, the command may include several component parts instructing different interactive elements to different tasks. For example, virtual interactive element controllers for steering and drive train components may be required to move the endpoint device 495 to its charging station. In addition, various location sensing sensor feeds may need to be processed by virtualized endpoint service 490 and endpoint control service 110 to direct the endpoint device 495 to its charging station. In an example, virtualized endpoint service 490 may relay the converted commands to endpoint device 495, specifically to steering and drive train components (block 468). In an example, endpoint device 495 may return to its charging station to await further commands (block 470). In an example, endpoint device 495 may enter a standby mode while maintaining an active network connection with virtualized endpoint service 490. In an example, endpoint control service 110 may further alert a user that the door must be opened to complete a planned cleaning cycle (block 480). This alert may be in the form of an intercom in the building, a message (e.g., SMS or voicemail) over a cellular network, an electronic mail or any other suitable form of alert. In an example, upon confirmation that the door has been opened, endpoint control service 110 reissues a command to endpoint device 495 to clean past the doorway.

In an example, all of the various sensors on endpoint device 495 may report simultaneously. For example, brush height and vacuum strength may continually be adjusted as endpoint device 495 moves back and forth between different surfaces. In addition, collision detection based on the ultra-

sound sensor may be constantly performed. In an example, battery life and dust bin capacity sensors are continually monitored for indications that endpoint device 495 should return to its charging station for a battery recharge or replacement, or a dust bin emptying or replacement.

FIG. 5 is a flow diagram illustrating connectivity redundancy for intelligently assisted IoT endpoint devices according to an example of the present disclosure. Although the examples below are described with reference to the flowchart illustrated in FIG. 5, it will be appreciated that many other methods of performing the acts associated with FIG. 5 may be used. For example, the order of some of the blocks may be changed, certain blocks may be combined with other blocks, and some of the blocks described are optional. The methods may be performed by processing logic that may comprise hardware (circuitry, dedicated logic, etc.), software, or a combination of both. In example system 500, a virtualized endpoint service 230 and an endpoint control service 110 provide intelligent assistance for IoT endpoint device 222 that loses network connectivity.

An example endpoint device 222 may be a camera equipped flying drone. In an example, endpoint device 222 may power on and open a secure connection to virtualized endpoint service 230 (block 510). In an example, the secure connection may be an encrypted and/or obfuscated network communication session. Virtualized endpoint service 230 may detect that its associated endpoint device 222 has powered on (block 512). In response to detecting that endpoint device 222 has powered on, virtualized endpoint service 230 may request a task for endpoint device 222 from endpoint control service 110 (block 514). In an example, endpoint control service 110 may retrieve a stored flight plan uploaded by a user (block 516). An example flight plan may be to provide images of commercial assets spread over a large distance, such as a pipeline, a railway, or a roadway, along with waypoints indicating locations of emphasis. Another example may be a surveillance route around the perimeter of an amusement park, an industrial park, or a storage yard. Endpoint control service 110 issues a series of commands to virtualized endpoint service 230 to have endpoint device 222 fly to a series of waypoints and take pictures (block 518). In an example endpoint control service 110 continually monitors sensor data from endpoint device 222 throughout the execution of the flight plan and issues adjustments as necessary, such as course corrections or responses to environmental stimuli (e.g., turbulence or weather). In an example, virtualized endpoint service 230 may convert the commands to an endpoint device 222 compatible format (block 520). In the example, virtualized endpoint service 230 then relays the converted commands to the endpoint device 222 (block 522).

In an example, endpoint device 222 powers on while it is within wireless signal range 215 of wireless access point 217. In the example, as endpoint device 222 begins flying to its first waypoint, it leaves wireless signal range 215, and loses its cellular connection to virtualized endpoint service 230 (block 524). In an example, virtualized endpoint service 230 may notify endpoint control service that it has lost its connection to endpoint device 222 (block 550). In the example, virtualized endpoint service 230 may deduce that it has lost connection to endpoint device 222 based on a stoppage of sensor data redirection from endpoint device 222. In another example, virtualized endpoint service 230 may detect a lack of a response from endpoint device 222 to a message for maintaining the security of its secured connection to endpoint device 222 (e.g., a lack of response to an authentication or encryption key request). In an example,

endpoint control service **110** may attempt to locate and connect to endpoint device **222** through other endpoint devices known to be in close physical proximity to endpoint device **222** (block **552**).

In an example, upon losing connectivity with virtualized endpoint service **230**, endpoint device **222** may be configured to redirect the camera sensor's output to local backup storage (block **526**). In an example, an endpoint processor on endpoint device **222** may determine that endpoint device **222** lacks an active network connection due to its communication session with virtualized endpoint service **230** being disconnected. In another example, the endpoint processor may determine that it is experiencing unacceptably high latency or packet loss rates. In an example, the endpoint processor may determine that endpoint device **222** has unacceptably low wireless signal strength (e.g., cellular signal strength). As a result, endpoint device **222** may stop redirection of the camera output data to the virtualized endpoint service **230** (block **528**). In some examples, raw data may be stored in local backups. In other examples, converted, and possibly compressed data may be stored in local backups. Where security concerns are paramount, encryption of local storage may be enabled, or local backups may instead not be recorded at all. In some examples, endpoint device **222** may be equipped with emergency programming in case of a loss of network connectivity. For example, endpoint device **222** may include capabilities to continue towards a previous waypoint, to maintain hovering, or to return to its origin in the event of a loss of network connectivity. In the example, endpoint device **222** after stopping redirection of I/O data, may process data from a GPS sensor to determine a current position of endpoint device **222**, and may navigate towards GPS coordinates of the first waypoint in the flight plan. In an example, an endpoint processor processing the GPS coordinates may determine that endpoint device **222** may need to turn to the left to reach its destination. To achieve the course correction, endpoint device **222** may be instructed to increase rotational speed of a propeller on the right side thereby turning the drone left. In an example, endpoint device **222** may be unaware and may lack the processing capabilities and data to be aware that endpoint controller service **110**'s original course was plotted to avoid requiring endpoint device **222** having to traverse a mountain between its current position and its first waypoint. In an example, the new route planned by endpoint device **222** may require significantly more power expenditure. In certain examples, endpoint device **222** may be equipped with a safety mode activated upon the stoppage of I/O data redirection. In an example, upon entering safety mode, endpoint device **222** may be configured to prevent or mitigate physical damage to the first endpoint device (e.g., maintain hovering in place, and/or slowly scale back propeller rotation speed to achieve a soft landing).

In an example, before or after losing connectivity with the network **115** over a cellular connection enabled by wireless access point **217**, endpoint device **222** may attempt to locate and establish a connection with other endpoint devices within short range wireless communication range of endpoint device **222**. For example, endpoint device **222** may attempt to locate other endpoint devices within WiFi range. In an example, endpoint device **222** may establish a connection to endpoint device **126**, which is also not within any wireless signal range (e.g., wireless signal ranges **210** and **215**), but endpoint device **126** may further be connected to endpoint devices **122** and **220** over another WiFi connection. In an example, endpoint device **126** is connected to network

115 using endpoint devices **122** and **220** as relay points. In an example endpoint device **222** may connect to endpoint device **126** through a short range WiFi radio, and endpoint device **126** may act as a relay for transmissions between endpoint device **222** and virtualized endpoint service **230** (block **530**). In an example, endpoint device **222** may have discovered endpoint device **126** prior to losing endpoint device **222**'s direct network connection, and may connect to endpoint device **126** responsive to losing the direct network connection. In an example, endpoint device **222** may continue attempting to discover more relays. For example, endpoint device **222** may eventually move out of range of endpoint device **126**. In another example, endpoint device **222** may experience unacceptable latency or packet loss with only one connection path to network **115**, especially where the connection path includes multiple relays.

In an example, virtualized endpoint service **230** may request endpoint device **222** to perform a handshake again to authenticate endpoint device **222** and to establish a secured communication channel through endpoint device **126** acting as a relay (block **536**). In an example, endpoint device **126** may act as a passive conduit for messages between virtualized endpoint service **230** and endpoint device **222**. In another example, endpoint device **126** may be included in the authentication and handshake process. In an example, upon establishment of the new connection relayed by endpoint device **126** between virtualized endpoint service **230** and endpoint device **222**, endpoint control service **110** is notified of the new connection and may reaffirm the previous instructions to endpoint device **222** (block **538**). In an example, endpoint control service **110** awaits continued I/O data redirection and reassesses the new I/O data from endpoint device **222**'s onboard sensors prior to issuing any new instructions. In an example, upon establishing a new connection to virtualized endpoint service **230**, endpoint device **222** uploads any I/O data stored in its onboard backup storage and begins redirecting I/O data including camera output to virtualized endpoint service **230** again (block **540**). In an example, endpoint device **222** may delete any backup data upon confirmation of transmission to virtualized endpoint service **230**. In an example, messages directed to endpoint device **222** may be distinguished from messages directed to endpoint device **126** based on message headers.

In an example, an endpoint device acting as a relay need not be an endpoint device of the same type as the endpoint device that lost connection. Returning to the robotic cleaning endpoint device, the robotic cleaning unit may lose connectivity by entering an elevator. In an example, the elevator may also be an intelligently assisted IoT endpoint device, allowing the robotic cleaning unit to re-establish its connection to its virtualized endpoint service while inside using the elevator as a relay.

In various examples of intelligently assisted IoT endpoint devices, advantages other than those related to higher processing capacity based on the scalability of endpoint control service **110** may be observed. For example, because the primary operational and control software for an endpoint device (e.g. endpoint device **145**) are moved from onboard the endpoint device **145** into virtualized endpoint service **140**, many software updates for drivers and other controls (e.g., virtual sensors **161** and **163** and virtual interactive element controllers **166** and **168**) may be performed server side rather than requiring an update of the endpoint device **145**. In an example, without requiring updates directly on an endpoint device, updates including security patches may be rolled out much more quickly and with lower negative impact due to unintended consequences of the updates. For

example, a failed update on a device may result in a non-operational device that requires service by a maintenance technician, while a failed update to a virtual machine hosting a virtualized endpoint service may simply require restoring a backup of the virtual machine. In addition, by isolating task specific processing software away from physical storage on an endpoint device, the likelihood of tampering on that software is much reduced, both through avoiding direct manipulation to the programming of the endpoint device from a malicious actor who gains access to the device and through avoiding the malicious actor gaining access to the software code to reverse engineer vulnerabilities.

In an example, endpoint devices may inhabit a wide variety of form factors. From a light bulb or heating unit with intelligence to turn on in response to an owner driving in the general direction towards home, to a driverless car or package delivering drone. Varying degrees of onboard processing capability may all benefit from intelligent assistance, especially from an endpoint control service being capable of integrating sensors and interactive elements from a plurality of endpoint devices to achieve a goal that may not be achievable through the endpoint device acting on its own. In various examples, the types of I/O data redirected for network processing may also depend on application. For example, emergency braking systems for a driverless car may be processed and activated on the endpoint device itself because momentary latency or loss of connectivity could have disastrous consequences. However, the same sensors used in the emergency braking system may redirect a copy of their data feeds to a virtualized endpoint service as inputs for commands to a virtualized interactive element controller for a steering system interactive element.

Intelligently assisted IoT endpoint devices may leverage the computing power of cloud computing to reduce power and processing requirements in a variety of applications. In many typical endpoint devices, batteries may represent a disproportional percentage of the weight of the endpoint device. Therefore, by reducing processor power requirements, battery size may be reduced, reducing the weight of the endpoint device, and increasing the effective range of the device due to less of a burden on the endpoint device's propulsion systems. Similarly, more powerful actuators may be installed in the endpoint device if power requirements from the computational side of the endpoint device are reduced. Added benefits to data security and ease of update may dramatically cut down on deployment costs for automated solutions with intelligently assisted IoT endpoint devices.

It will be appreciated that all of the disclosed methods and procedures described herein can be implemented using one or more computer programs or components. These components may be provided as a series of computer instructions on any conventional computer readable medium or machine readable medium, including volatile or non-volatile memory, such as RAM, ROM, flash memory, magnetic or optical disks, optical memory, or other storage media. The instructions may be provided as software or firmware, and/or may be implemented in whole or in part in hardware components such as ASICs, FPGAs, DSPs or any other similar devices. The instructions may be executed by one or more processors, which when executing the series of computer instructions, performs or facilitates the performance of all or part of the disclosed methods and procedures.

It should be understood that various changes and modifications to the example embodiments described herein will be apparent to those skilled in the art. Such changes and modifications can be made without departing from the spirit

and scope of the present subject matter and without diminishing its intended advantages. It is therefore intended that such changes and modifications be covered by the appended claims.

The invention is claimed as follows:

1. A system comprising:

a plurality of endpoint devices connected to a network, the plurality of endpoint devices including a first endpoint device and a second endpoint device, wherein the first endpoint device includes a first plurality of physical sensors including a first physical sensor and a second physical sensor and the first endpoint device includes a first plurality of interactive elements including a first interactive element and a second interactive element;

a first endpoint processor executing on the first endpoint device to:

determine that the first endpoint device has an active network connection;

responsive to determining that the first endpoint device has an active network connection, redirect input/output data from the first plurality of sensors to a first network interface;

one or more processors, wherein the one or more processors are located over the network from the plurality of endpoint devices;

a first virtualized endpoint service associated with the first endpoint device executing on the one or more processors including:

a first plurality of virtual sensors each respectively associated with a physical sensor of the first plurality of physical sensors including a first virtual sensor associated with the first physical sensor, and a second virtual sensor associated with the second physical sensor;

a first plurality of virtual interactive element controllers each respectively associated with an interactive element of the first plurality of interactive elements, including a first virtual interactive element controller associated with the first interactive element and a second virtual interactive element controller associated with the second interactive element;

a first virtualized endpoint engine;

the first virtualized endpoint service executing to:

receive, over the network by the first virtual sensor, first redirected data collected by the first physical sensor, wherein the first redirected data is part of the input/output data redirected by the first endpoint device;

output, by the first virtual sensor, the first redirected data to the first virtualized endpoint engine;

convert, by the first virtualized endpoint engine, the first redirected data into a first converted data compatible with an endpoint control service;

send, by the first virtualized endpoint engine, the first converted data to the endpoint control service;

receive, by the first virtualized endpoint engine, from the endpoint control service, a first command;

send, by the first virtualized endpoint engine, the first command to the first virtual interactive element controller;

convert, by the first virtual interactive element controller, the first command into a second command compatible with the first interactive element;

send the second command, over the network, causing the first interactive element to perform a first task that results in a change in one of the first endpoint device or endpoint device's sensor and a local environment surrounding the first endpoint device; and

23

receive, over the network by the first virtual sensor, second redirected data collected by the first physical sensor, wherein the second redirected data is different from the first redirected data as a result of performing the first task.

2. The system of claim 1, wherein the first interactive element includes at least one of, a propeller, a wheel, a tread track, a motor, a jet, a magnetic levitation system, a gyroscope stabilizer, a braking system, and a steering system.

3. The system of claim 1, wherein the first interactive element controls at least one of the first physical sensor and the second physical sensor and the first task changes at least one of an orientation, a focus, and a mode of the first physical sensor.

4. The system of claim 1, wherein the second redirected data is an updated version of the first redirected data.

5. The system of claim 1, wherein the first physical sensor is one of a camera, a microphone, an accelerometer, an antenna, a battery life sensor, a compass, a Global Positioning System sensor, a gyroscope, and a radio.

6. The system of claim 1, wherein at least one of the first endpoint device and the second endpoint device is connected to the network with a wireless connection.

7. The system of claim 6, wherein the first endpoint device is connected to the network via a first connection to the second endpoint device, and the second endpoint device relays information between the first connection and the network.

8. The system of claim 7, wherein the first endpoint device connects to the second endpoint device responsive to losing a direct connection to the network.

9. The system of claim 8, wherein the first endpoint device communicates with the second endpoint device via short distance wireless communications.

10. The system of claim 1, wherein the first virtualized endpoint service is exclusively associated with one endpoint device of the plurality of endpoint devices.

11. The system of claim 1, wherein the first virtualized endpoint service executes in an isolated guest in a cloud environment.

12. The system of claim 11, wherein the cloud environment is one of a public cloud environment and a private cloud environment.

13. The system of claim 11, wherein the isolated guest is one of a virtual machine and a container.

14. The system of claim 1, wherein the endpoint control service executes on a plurality of isolated guests.

15. The system of claim 14, wherein a quantity of isolated guests in the plurality of isolated guests scales based on the computing requirements for interpreting a plurality of converted data from a plurality of virtualized endpoint services and an issuing of a plurality of commands.

16. The system of claim 1, wherein communications between the first virtualized endpoint service and the first endpoint device are secured by encryption and obfuscation.

17. The system of claim 1, wherein the first endpoint device is at least one of a robotic vehicle, a drone, and a robotic device.

18. The system of claim 1, wherein the first endpoint device forwards sensor data from the first physical sensor and the second physical sensor to the first virtualized endpoint service for storage.

19. The system of claim 18, wherein the first endpoint device deletes any sensor data on the first endpoint device upon confirmation of transmission to the first virtualized endpoint service.

24

20. The system of claim 1, wherein the first virtualized endpoint service is communicatively coupled with an interface for a user to control the first endpoint device.

21. The system of claim 1, wherein the first endpoint device includes safety components that control the first endpoint device in response to a loss of network connectivity.

22. The system of claim 1, wherein a second virtualized endpoint service controls the second endpoint device.

23. The system of claim 22, wherein the first virtualized endpoint service includes a first application programming interface and the second virtualized endpoint service includes a second application programming interface.

24. The system of claim 23, wherein a user interface controls the first endpoint device with the first application programming interface and controls the second endpoint device with the second application programming interface.

25. The system of claim 1, wherein the first endpoint processor determines that the first endpoint device lacks the active network connection.

26. The system of claim 25, wherein the first endpoint processor determines that the first endpoint device lacks the active network connection due to at least one of a latency of transmissions to the network and a wireless signal strength.

27. The system of claim 25, wherein responsive to determining that the first endpoint device lacks the active network connection, the first endpoint processor stops redirecting the input/output data from the first plurality of sensors to the first network interface.

28. The system of claim 27, wherein responsive to a stoppage of redirecting the input/output data, the first endpoint device:

processes a non-redirected data into a third command compatible with the second interactive element; and sends the third command to the second interactive element causing the second interactive element to perform a second task.

29. The system of claim 27, wherein responsive to a stoppage of redirecting the input/output data, the first endpoint device continues to perform the first task.

30. The system of claim 27, wherein responsive to a stoppage of redirecting the input/output data, the first endpoint device enters a safety mode until the active network is re-established, wherein the safety mode is configured to at least one of prevent and mitigate physical damage to the first endpoint device.

31. The system of claim 27, wherein the first endpoint device temporarily stores the input/output data from the first plurality of sensors in a local buffer.

32. The system of claim 1, wherein the first plurality of virtual sensors includes a respective virtual sensor associated with each physical sensor of the first plurality of physical sensors whose input/output data is redirected to the first network interface.

33. The system of claim 32, wherein the first virtual sensor appears to be the first physical sensor to the first virtualized endpoint engine.

34. The system of claim 1, wherein the first plurality of virtual interactive element controllers includes a respective virtual interactive element controller associated with each interactive element of the first plurality of interactive elements.

35. A method comprising:
determining that an endpoint device has an active network connection;
responsive to determining that the endpoint device has an active network connection, redirecting input/output

25

data from a plurality of sensors of the endpoint device including a first physical sensor to a network interface; receiving, over a network by a first virtual sensor of a virtualized endpoint service associated with the first physical sensor, first redirected data collected by the first physical sensor, wherein the first redirected data is part of the input/output data redirected by the first endpoint device; 5
 outputting, by the first virtual sensor, the first redirected data to a first virtualized endpoint engine; 10
 converting, by the virtualized endpoint engine, the first redirected data into a first converted data compatible with an endpoint control service;
 sending, by the virtualized endpoint engine, the first converted data to the endpoint control service; 15
 receiving, by the virtualized endpoint engine from the endpoint control service, a first command;
 sending, by the virtualized endpoint engine, the first command to a first virtual interactive element controller associated with a first interactive element of the endpoint device; 20
 converting, by the virtual interactive element controller, the first command into a second command compatible with the first interactive element;
 sending the second command, over the network, causing the first interactive element to perform a first task that results in a change in one of the first endpoint device or endpoint device's sensor and a local environment surrounding the first endpoint device; and 25
 receive, over the network by the first virtual sensor, second redirected data collected by the first physical sensor, wherein the second redirected data is different from the first redirected data as a result of performing the first task. 30

36. A computer-readable non-transitory storage medium storing executable instructions, which when executed by a computer system, cause the computer system to: 35
 determine that an endpoint device has an active network connection;

26

responsive to determining that the endpoint device has an active network connection, redirect input/output data from a plurality of sensors of the endpoint device including a first physical sensor to a network interface; receive, over a network by a first virtual sensor of a virtualized endpoint service associated with the first physical sensor, first redirected data collected by the first physical sensor, wherein the first redirected data is part of the input/output data redirected by the first endpoint device; 5
 output, by the first virtual sensor, the first redirected data to a first virtualized endpoint engine;
 convert, by the virtualized endpoint engine, the first redirected data into a first converted data compatible with an endpoint control service; 10
 sending, by the virtualized endpoint engine, the first converted data to the endpoint control service;
 receive, by the virtualized endpoint engine from the endpoint control service, a first command; 15
 send, by the virtualized endpoint engine, the first command to a first virtual interactive element controller associated with a first interactive element of the endpoint device;
 convert, by the virtual interactive element controller, the first command into a second command compatible with the first interactive element; 20
 send the second command, over the network, causing the first interactive element to perform a first task that results in a change in one of the first endpoint device or endpoint device's sensor and a local environment surrounding the first endpoint device; and
 receive, over the network by the first virtual sensor, second redirected data collected by the first physical sensor, wherein the second redirected data is different from the first redirected data as a result of performing the first task. 25

* * * * *